



Third Party Call V3.0 Web Service: SoapUI Example

Version 1.0



This work is licensed under a [Creative Commons Attribution-Share Alike 2.5 Canada](https://creativecommons.org/licenses/by-sa/2.5/ca/) License

Revision History

Rev #	Date	Comments	Contributors
0.1	20010-01-20	Release	Ian Bothwell



Table of Contents

1. PHP Client Code Example

4



1. SoapUI Example

SoapUI is a graphical tool for testing web services. It can be used to quickly test ACE services with only SoapUI and a valid WSDL file. go to the SoapUI website for downloads and a full user guide.

1.1. Using SoapUI to invoke the ThirdPartyCall V3 service on ACE

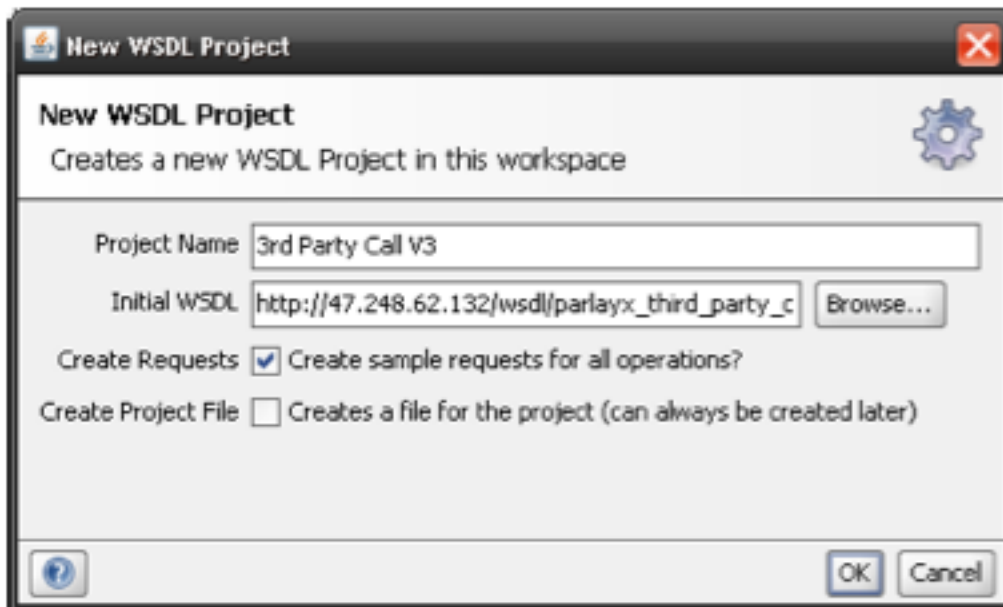
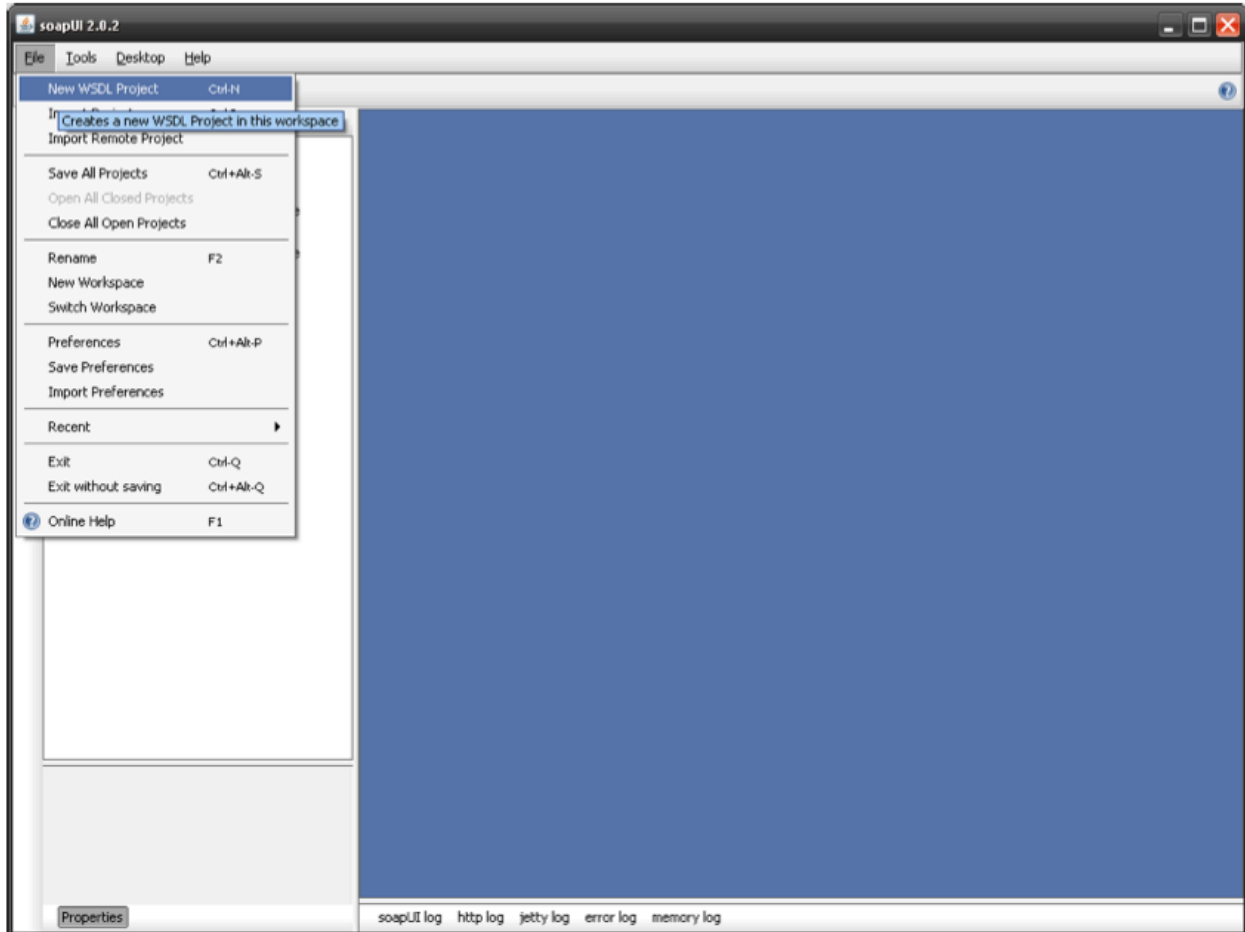
1. Download SoapUI to your Windows PC from <http://soapui.org>
2. Create a new SoapUI project from a WSDL file.

Open the SoapUI Gui, then create a new project. Load the WSDL file for the 3rd Party Call V3.

- Common WSDL definition files
 - parlayx_common_faults_3_0.wsdl
 - parlayx_common_types_3_1.xsd
- Third party call WSDL definition files
 - parlayx_third_party_call_interface_3_4.wsdl
 - parlayx_third_party_call_service_3_4.wsdl

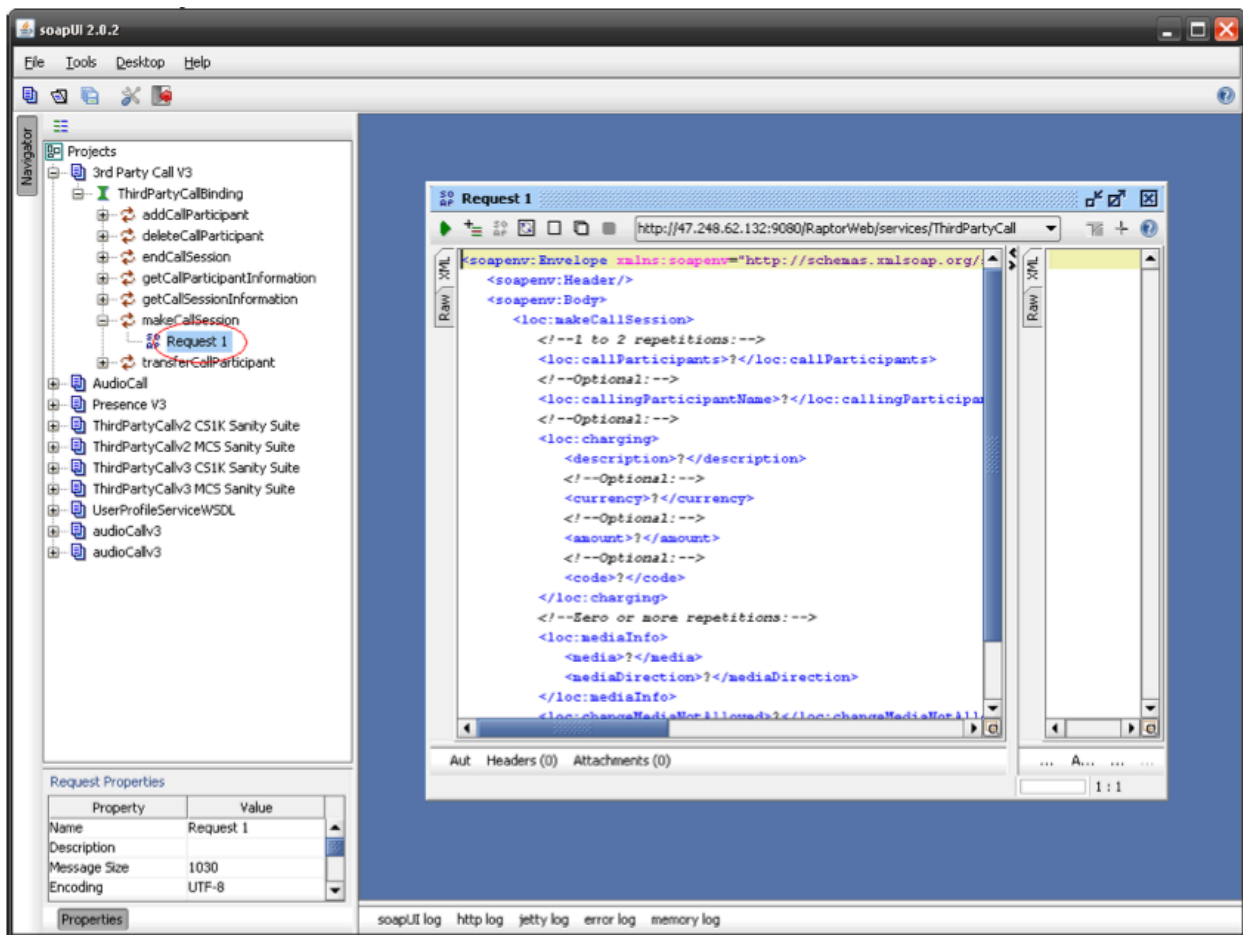
Note: Make sure to supply the appropriate IP address for ACE. This address should have been provided to you as part of your Coral CEA Sandbox Welcome Package and can be found on the Coral CEA Developer site (<http://developer.coralcea.ca>).





3. Open the makeCallSession Request and fill in the data.

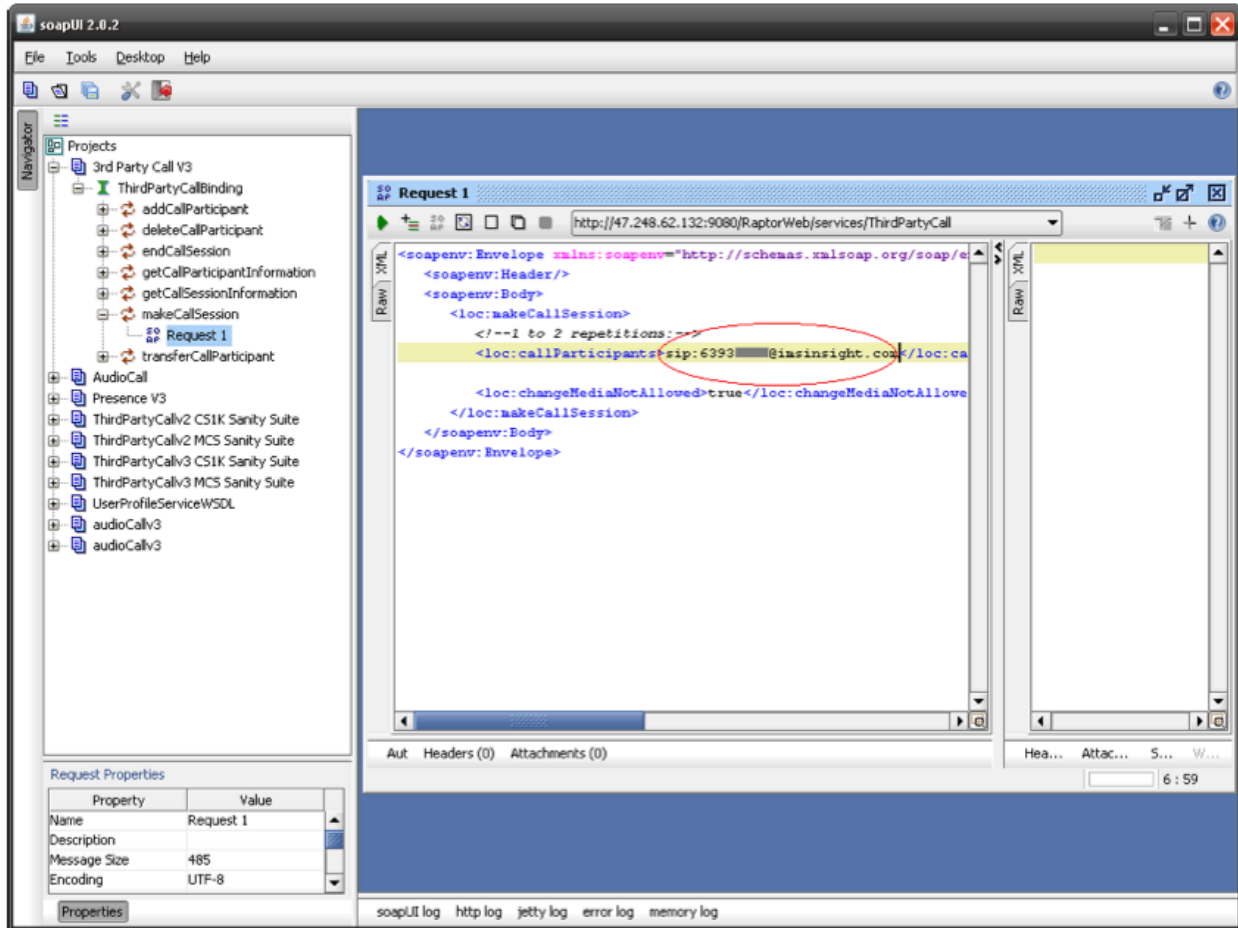
Open Request1 under the makeCallSession service of your new project. This will bring up a window with all the available parameters for the service:



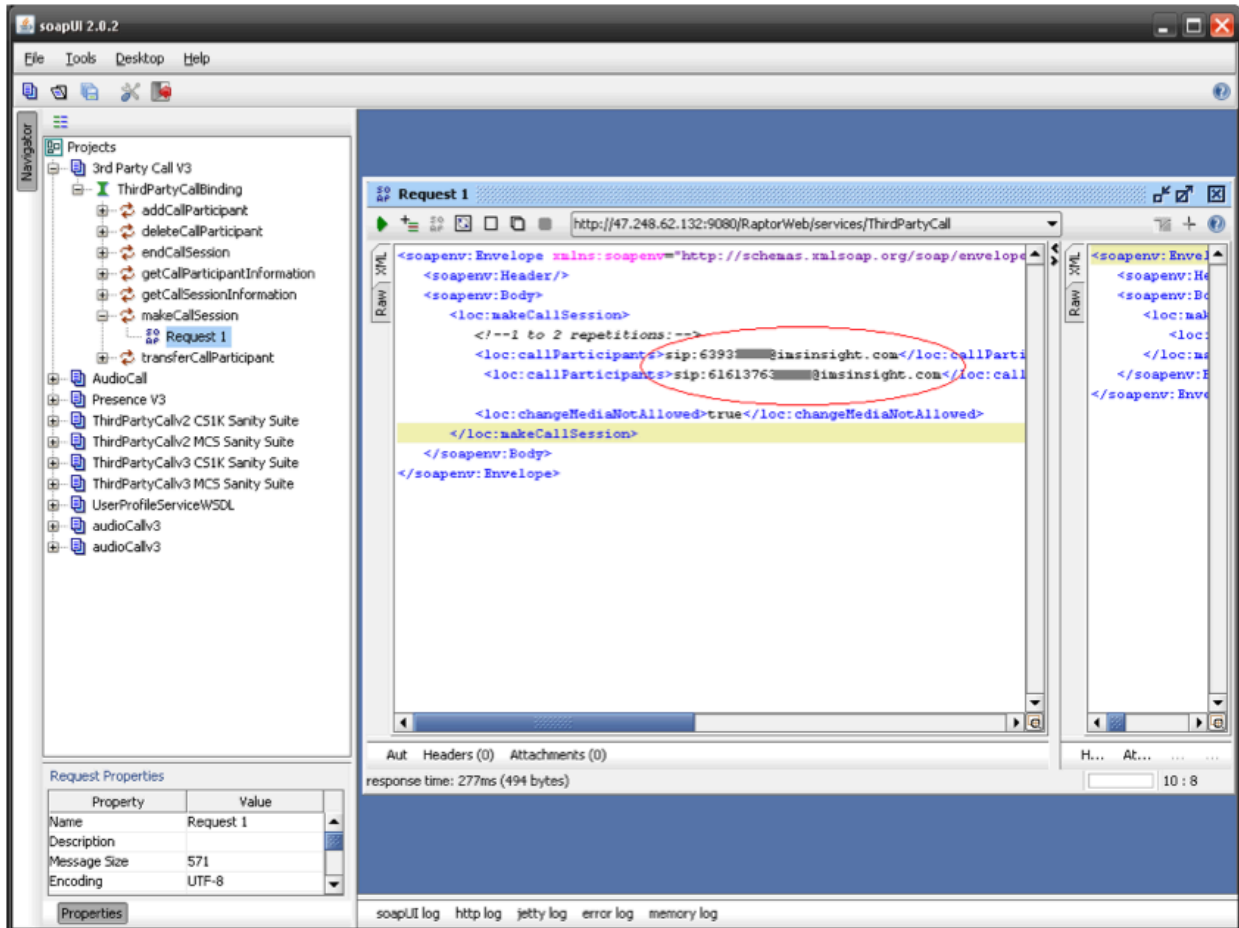
Most of the parameters are optional. Remove all of them, except for "loc:callParticipants" and "loc:changeMediaNotAllowed", then fill in the data. CallParticipants are the numbers you are connecting. For a single-leg call, you can just put in one number between the callParticipants tags, as shown in the first image below. To connect two parties, copy the callParticipants line, and paste it below the original. The second call participant tags can contain a second call participant, as shown in the second image below. In both cases, set the changeMediaNotAllowed value to either true or false.

Single leg call:





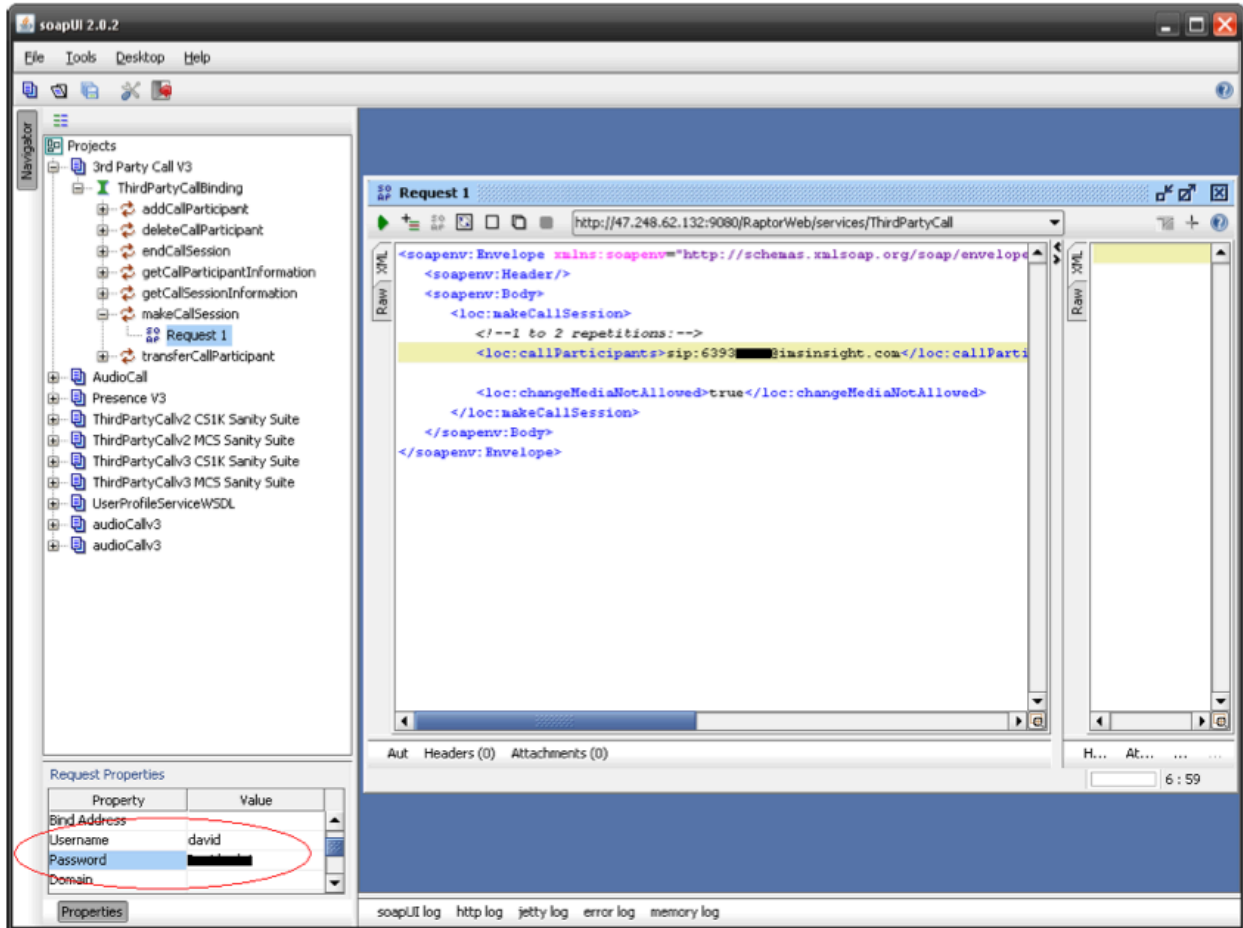
Two call participants:



4. Fill in User Credentials

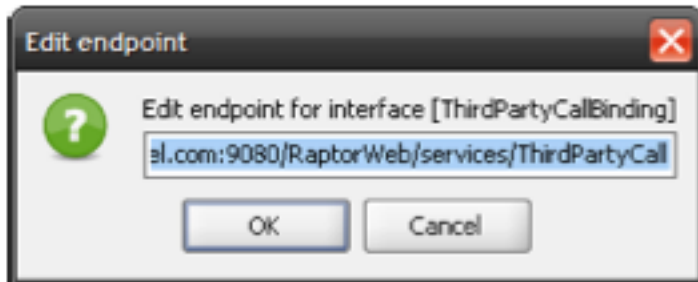
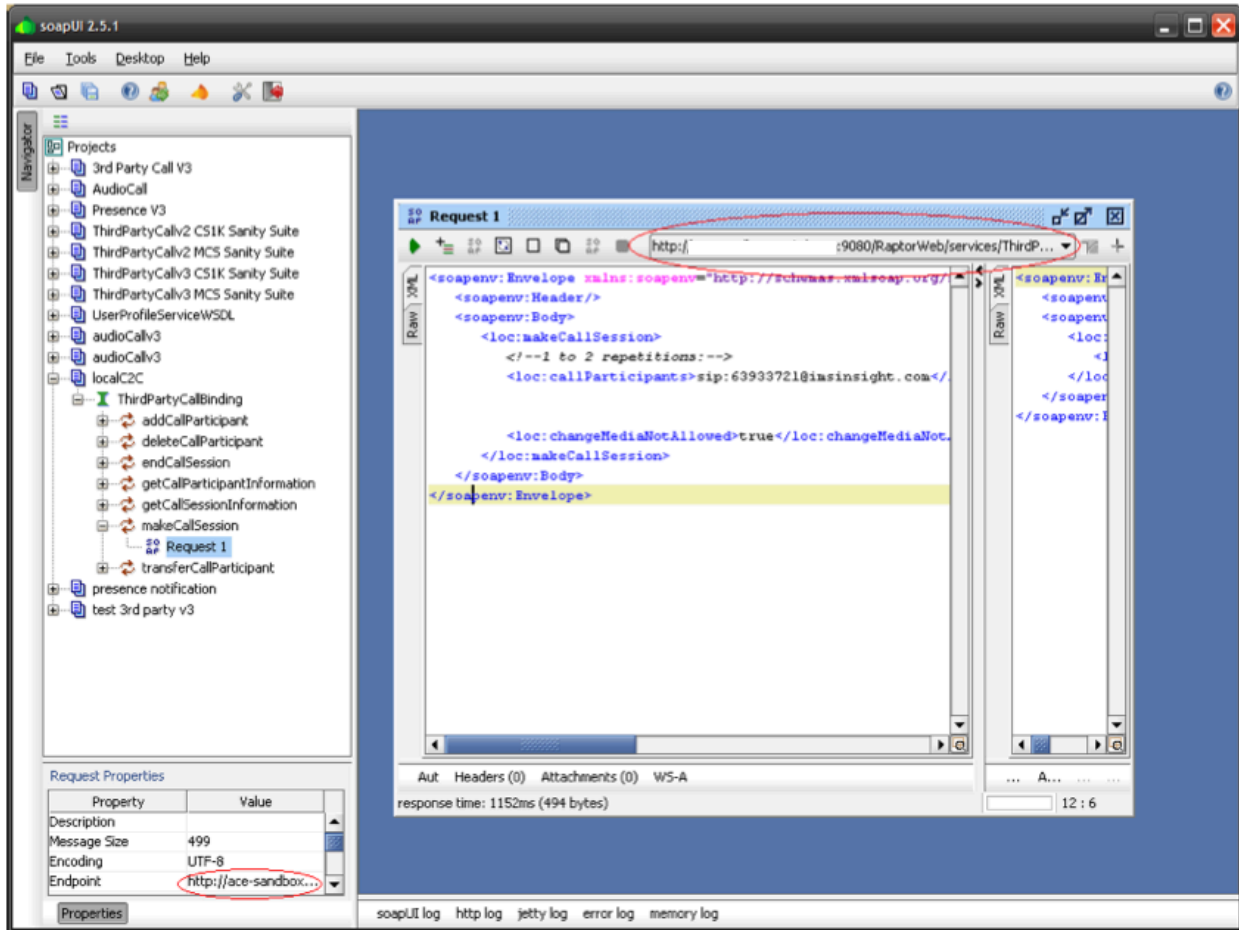
To access the ACE web services, you'll need a valid user name and a password. You should have been given one when you signed up for a Coral CEA Sandbox Account. Fill in these values in the Request Properties section at the bottom-left corner of the SoapUI GUI.





5. Verify the endpoint.

The service endpoint must contain the URI for the service that is being invoked. For Third Party Call V3, the endpoint is “http://[ACE_IP_ADDRESS]:9080/RaptorWeb/services/ThirdPartyCall” (Make sure to replace the ACE_IP_ADDRESS with the appropriate value). Edit the service endpoint in the Request window, and add the correct service endpoint URI.



6. Make the call You're set to make your call. Press the green Submit Request arrow, and listen for the phone to ring. A successful call will have a session ID in the result field of the response.

soapUI 2.0.2

File Tools Desktop Help

Navigator

- Projects
 - 3rd Party Call V3
 - ThirdPartyCallBinding
 - addCallParticipant
 - deleteCallParticipant
 - endCallSession
 - getCallParticipantInformation
 - getCallSessionInformation
 - makeCallSession
 - Request 1
 - transferCallParticipant
 - AudioCall
 - Presence V3
 - ThirdPartyCalv2 CS1K Sanity Suite
 - ThirdPartyCalv2 MCS Sanity Suite
 - ThirdPartyCalv3 CS1K Sanity Suite
 - ThirdPartyCalv3 MCS Sanity Suite
 - UserProfileServiceWSDL
 - audioCalv3
 - audioCalv3

Request 1

Submit request to specified endpoint URL

http://47.248.62.132:9080/RaptorWeb/services/ThirdPartyCall

```

<?xml version='1.0' encoding='utf-8'>
<soap:Envelope xmlns:soap="http://schemas.xmlsoap.org/soap/envelope/">
  <soap:Header/>
  <soap:Body>
    <loc:makeCallSessionResponse xmlns:loc="http://www.csapi.org/schemas/loc" >
      <loc:result>66f13a7d-7ab7-4f65-9a59-8a2dd88936dd</loc:result>
    </loc:makeCallSessionResponse>
  </soap:Body>
</soap:Envelope>
  
```

... Hea... Attach... Headers (6) Attachments (0) SSL Info WSS (0)

response time: 272ms (494 bytes)

Property	Value
Bind Address	
Username	david
Password	██████████
Domain	

Properties

soapUI log http log jetty log error log memory log

